



MONTHLY MEMBERSHIP PROGRESS REPORT

District 27 E1

Results as of: 06/30/2018

GMT: MICHAEL MOLEND

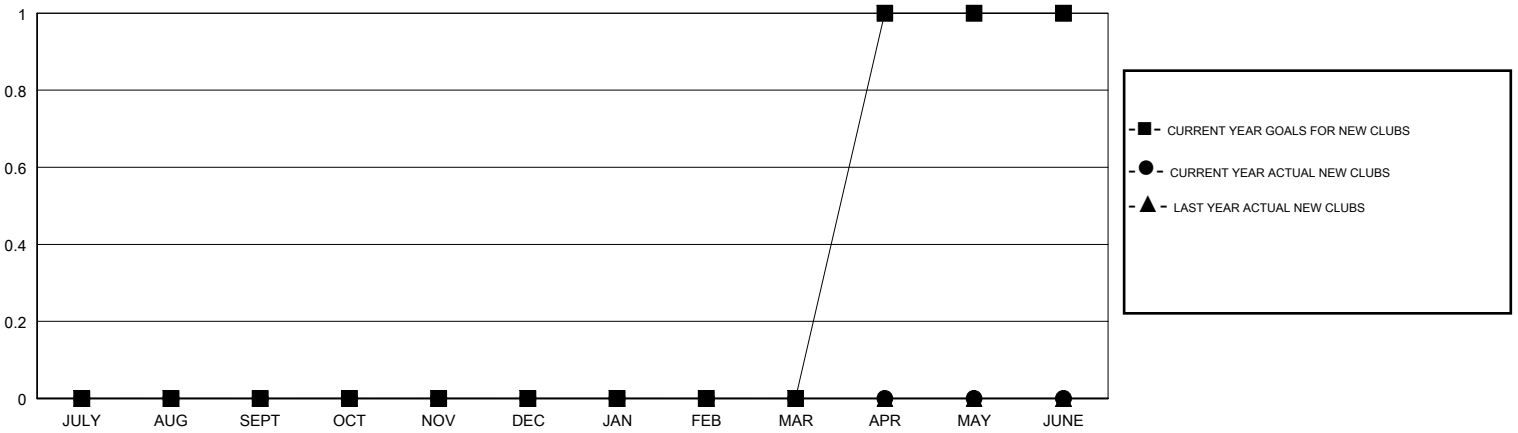
LOCATION WISCONSIN

GMT CA

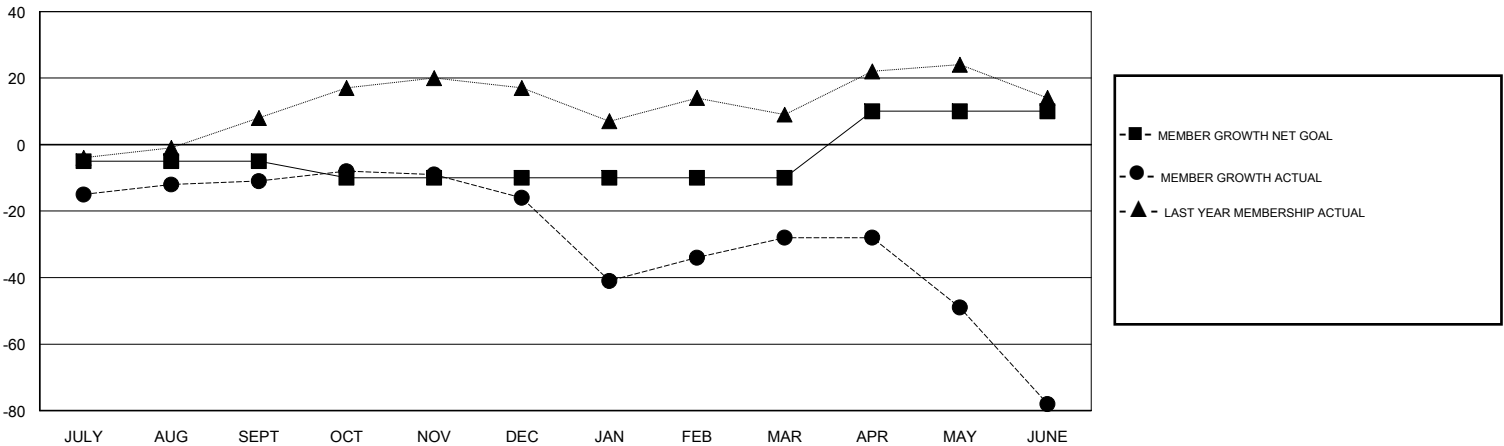
Clubs			
RESULTS FOR 2017-2018			
QUARTER	NEW CLUB GOAL	NEW CLUBS	DROPPED CLUBS
JULY/AUG/SEPT	0	0	0
OCT/NOV/DEC	0	0	0
JAN/FEB/MAR	0	0	1
APR/MAY/JUNE	1	0	0

Members			
RESULTS FOR 2017-2018			
QUARTER	MEMBER GROWTH NET GOAL	MEMBER GROWTH ACTUAL	DROPPED MEMBERS ACTUAL (including transfers)
JULY/AUG/SEPT	-5	25	31
OCT/NOV/DEC	-5	28	31
JAN/FEB/MAR	0	55	65
APR/MAY/JUNE	20	38	84

GOALS AND ACTUAL NEW CLUBS CUMULATIVE



GOALS AND ACTUAL MEMBERS CUMULATIVE



DROPPED CLUBS: 1	34 CLUBS OF 46 ADDED 1 OR MORE NEW MEMBERS	<u>GENDER DISTRIBUTION</u>	
DROPPED MEMBERS		MALE	1,122 (68.96%)
DECEASED	18	FEMALE	505 (31.04%)
CLUB CANCELLED	24	Women Percentage Fiscal Year Goal: 28%	
OTHER	169	TOTAL FAMILY UNIT MEMBERS	0
TOTAL	211	FAMILY MEMBERS PAYING HALF DUES	0

[CLICK HERE FOR CUMULATIVE MEMBERSHIP DATA](#)